



Hi-Gravitational Barrel Finishing Machine



Mighty-Mild[®] Vertical

マイティ・マイルド



CE For International Models MMC1-4V

Tipton Corp.

<https://www.tipton.co.jp/english/>

Head Office
3-19-21 Toyoda, Minami-Ku, Nagoya,
Aichi Prefecture 457-8566 Japan
Tel : +81-52-692-6666
Fax: +81-52-692-9445

Overseas Sales
3-19-21 Toyoda, Minami-Ku, Nagoya,
Aichi Prefecture 457-8566 Japan
Tel : +81-52-692-0901
Fax: +81-52-692-9445

Tobishima Factory
3-25-1 Odakara, Tobishima-Mura, Ama-Gun,
Aichi Prefecture 490-1438 Japan
Tel : +81-567-56-7500
Fax: +81-567-56-7513

Quality Assurance Section
for Product Quality

Tel : +81-567-56-7503
Fax: +81-567-56-7516

Engineering Section
for Machine Maintenance

Tel : +81-567-56-7504
Fax: +81-567-56-7514

E-mail

sales-department@tipton.co.jp
overseas@tipton.co.jp

Note) All unapproved reproduction
of a report a photograph, etc are
forbidden found in this catalog.

This catalog is printed using
environment-friendly vegetable ink.

23/01/300

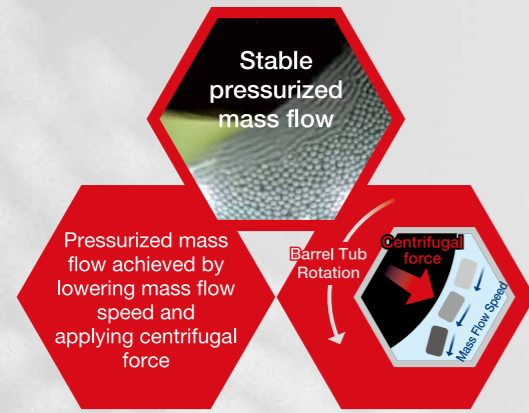
Patent	No.5555383	Design	No.1694983	Awarded	2019 Minister of Economy, Trade and Industry of National Invention Award 2018 Japan Chamber of Commerce Chairman's Prize and Machinery Industrial Design Award 2015 Nagoya City Mayor Prize of Aichi Environmental Award	Made in Japan
	No.5939709		No.1694984			

Industry's highest 40G!

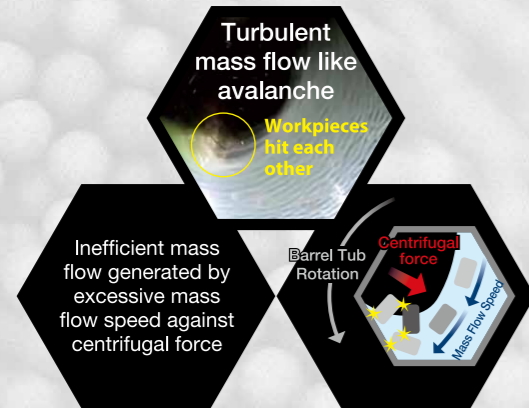
Principle of hi-gravitational barrel finishing method

Stable pressurized mass flow (patented) enhances the performance of abrasive media to the maximum.

Mighty-Mild.



Centrifugal Barrel Finishing Machine



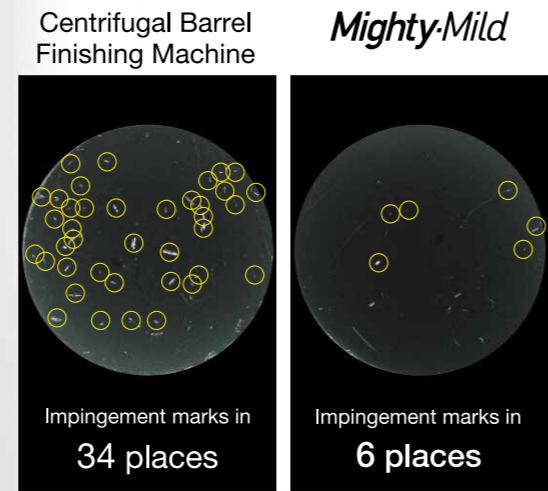
Suited applications

- | | |
|---|---|
| Electric and Electronics Machine elements and precision | Ceramic capacitors, magnets, optical components |
| Medical and dental | Miniature bearings, cutting chips, oil-pneumatic components |
| Ornament and daily necessities | Implants, artificial joints, dental brackets, endoscopic components |
| | Fishing tools, clock components, jewelry |

Polishing quickly and carefully with the industry's highest 40G

Drastic reduction of cracks and impingement marks

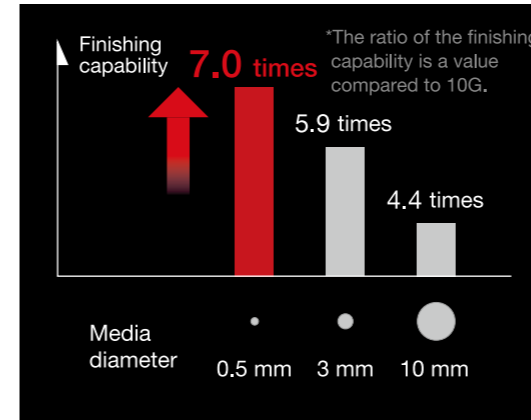
Smooth pressurized flow reduces the number of collisions between workpieces, resulting in a drastic reduction in cracks and impingement flaws.



Drastic improvement in finishing capability

It exerts more than four times the finishing capability compared to conventional centrifugal barrel machines. In particular, it gives a higher finishing effect to minute workpieces and media.

Influence of finishing capability due to increase in pressure (10G → 40G)

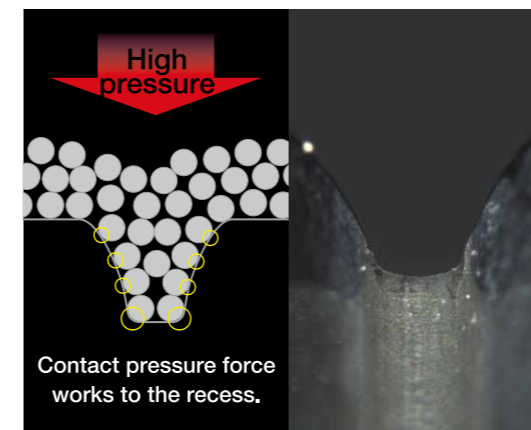
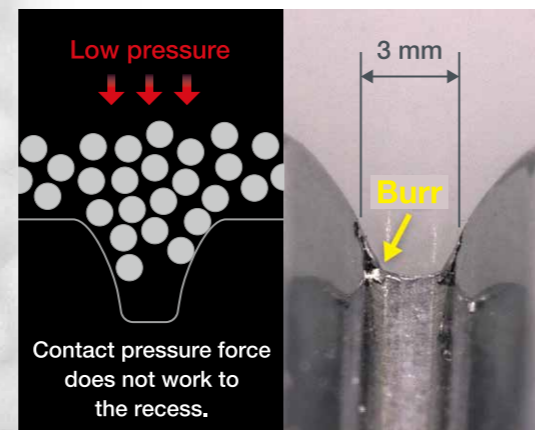


Even complicated recesses and fine shapes are finished quickly and carefully.



The industry-highest gravity, 40G, removes hidden burrs by pushing media deep into gaps that could not be polished before.

Mighty-Mild

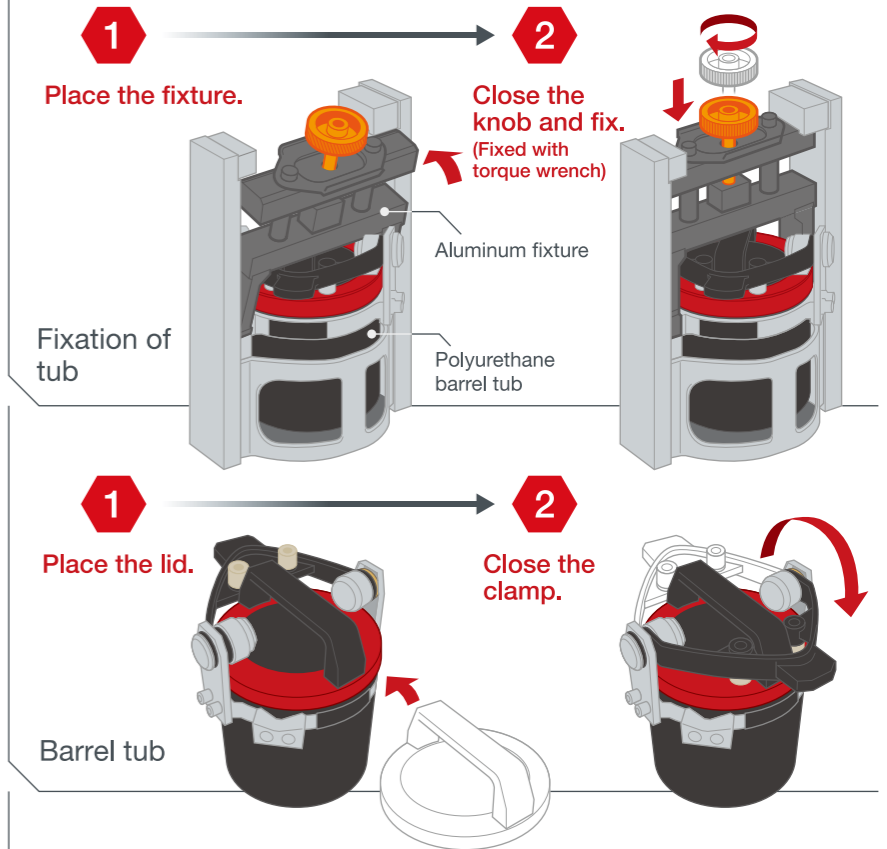


Labor saving, safe, and simple

Universal design easily operable for anyone

Light and easily operable. Even women and the elderly can handle it easily.

Two-motion system



Highest reliability and support for stable operation

- ▶ **Highest-level safety reliability**
Compliant with ISO13489-1 European and American PLE safety standards
- ▶ **Automatic rotation speed correction function**
Automatically corrects the rotation speed to +/-5 rpm or less of the setting. This ensures the constant finishing condition. **Patent No. 5939709**
- ▶ **Five times longer product life of drive section (compared to conventional models)**
Newly developed bearing structure realizes both the industry's highest 40G and longer life of the drive section.
- ▶ **Barrel tub fixation detection function**
Detects the failure to fix the barrel tub or looseness caused during finishing and automatically stops the tub. **Patent pending**

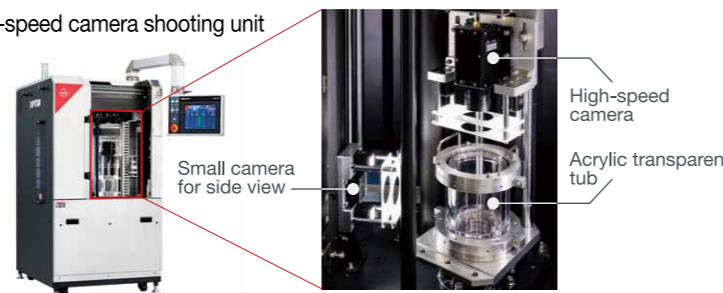
Special specifications

Flow analysis specification (high-speed camera)

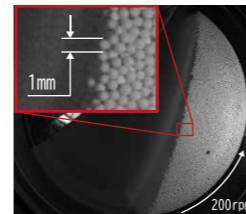
The behavior in the highly rotating finishing tub can be observed precisely using the high-speed camera. In addition, the speed distribution of the content can be evaluated quantitatively by PIV analysis of the captured video.

*Applicable to both dry and wet types.
*PIV (Particle Image Velocimetry): A method to measure velocity distribution of particles on a two-dimensional plane based on a particle image

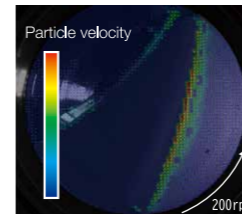
High-speed camera shooting unit



Shooting by high-speed camera



PIV analysis results



Please contact us for details regarding this specification.

MMC1-4V specifications

Model	MMC1-4V
No. of barrels	4 barrels
ID of Barrel Tub	1.0 L / 105 mm (Inner diameter) x 105 mm (Depth) 0.5 L / 105 mm (Inner diameter) x 52.5 mm (Depth)
Motor capacity	Revolution / 2.2 kW Rotation / 2.2 kW
Machine size	950 mm (W) x 1220 mm (D) x 1620 mm (H)
Machine weight	Approx. 900 kg

Dimensions (mm)

